

BIOREMEDIATION SCIENCE AND TECHNOLOGY RESEARCH

Website: <http://journal.hibiscuspublisher.com/index.php/BSTR>

BSTR VOL 4 NO 1
2016

Phenol Removal Via Cellular Immobilization: A Mini Review

Abubakar Aisami¹, Allamin Ibrahim Alkali², Nur Adeela Yasid^{3*}

¹Department of Biological Sciences, Faculty of Science, Gombe State University, Gombe State, Nigeria.

²Department of Microbiology, Faculty of Science, University of Maiduguri, PMB 1069 Borno State, Nigeria.

³Department of Biochemistry, Faculty of Biotechnology and Biomolecular Sciences, Universiti Putra Malaysia, UPM 43400 Serdang, Selangor, Malaysia.

* Corresponding Author

Dr. Nur Adeela Yasid

Department of Biochemistry,

Faculty of Biotechnology and Biomolecular Sciences,

Universiti Putra Malaysia,

UPM 43400 Serdang,

Selangor, Malaysia.

Email: adeela@upm.edu.my

HISTORY

Received: 15th Feb 2016
Received in revised form: 15th March 2016
Accepted: 15th of May 2016

KEYWORDS

phenol
biodegradation
immobilisation
removal

ABSTRACT

Phenolic compounds or phenols are a group of aromatic compounds that comprises a hydroxyl group (OH) that is directly bonded to an aromatic ring. Phenols are injurious to organisms even at even low concentrations with many of them are categorized as dangerous pollutants because of their likely harm to human well-being. This review attempts to discuss the various merits and demerits of immobilization matrices employed for phenol-degrading microorganisms' immobilization. One of several key points of cellular immobilization is the capacity to protect bioremediation agents towards toxic levels of specific toxicants and safeguarding from predatory microorganisms. However, this shielding course of action should never impede the diffusion of substrates into the pores of the immobilization structure. In the end the choice of a particular immobilization method will strongly hinge on aspects of economy, safety and efficacy.

INTRODUCTION

Industries across the world produce billions of tonnes of noxious chemicals into the environment that gets it way into the water, air, and Land [1,2]. Combustion of fuels in the factories is the major way through which, toxic compounds such as hydrocarbons and heavy metal enter the environment [3]. The air pollution results an increased in sickness and premature deaths from asthma, bronchitis, emphysema, pneumonia [4], coronary artery diseases and abnormal heart rhythms. Direct or indirect discharges of toxic pollutants into water bodies or land without sufficient treatment to eliminate these dangerous compounds are the primary source of water and soil pollutions [3].

Industries without proper ways to control overflow also add the toxic toxicants such as polyaromatic hydrocarbons, heavy metals, and pesticides to the environment [5]. Oil spills, deck overspill leakages from vessels, pipelines and storage tanks and offshore disposal of waste are also major sources of water pollution [1,2]. Hydrocarbon and heavy metal pollutions can increase the vulnerability to disease and upset reproductive processes and give harmfully affects to plant and aquatic lives

[6,7]. Water and soil pollutions are a universal problem, and require continuous monitoring and remediation [5].

Phenol

Phenolic compounds or phenols are a group of aromatic compounds that comprises a hydroxyl group (OH) that is directly bonded to an aromatic ring [3] (**Fig. 1**). Phenols are injurious to organisms even at even low concentrations with many of them are categorized as dangerous pollutants because of their likely harm to human well-being [8]. Some of the phenolic compounds include chlorophenols, nitrophenols, methyl phenols, alkylphenols, aminophenols, butylhydroxy-toluene, nonylphenol and Bisphenols A [3].

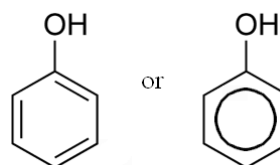


Fig. 1. Chemical structure of phenol.

Phenol was first isolated in 1841 from coal tar by Ferdinand Runge, a German scientist [8]. Phenol is one of the most significant industrial effluents discharged by the processing industries such as oil refineries, dye, pesticides, plastic plants and pharmaceutical industries [9].

Sources of phenol

The primary source of natural phenol is from the decomposition of organic materials and other fossils. Coal is one of the major minerals aside from oil and gas. Coal tars are produced from coal mining. Coal from the fossil is far more plentiful than oil or gas, with around 119 years of coal remaining worldwide. World annual coal production was estimated at 6.7 billion tons in 2009 with China producing almost 40% and became the highest global producer followed by The United States with 15% of the annual coal production [10]. Malaysia had an estimated coal resources of about 1.72 billion tons [11], with 99% is from East Malaysia namely Sarawak 80% and Sabah 19 % while three in the Malaysian Peninsular states of Perak, Perlis and Selangor having only 1 % [12].

Toxicity of phenol

Phenol toxicity can be divided based on its effect on; Humans, fish and plants.

Human

Phenol is the critical environmental pollutant that is noxious to livings even at low concentration [13]. The approved level of phenol in water is < 0.002 mg/L. Lethal dose is 50-500 mg/kg [14]. Acute exposure to phenol could result in many health problems such as the central nervous system disorders and can potentially leads to coma, muscle weakness, burning effects on skin and other effects including renal damage, irritation of the eye, headache, liver damage, gastrointestinal disturbance. In addition, it is also suspected that the exposure to phenol may cause cancer and tumor [15]. Chronic exposure to phenol is associated with an increased risk of insufficient blood to the heart and also coronary artery diseases [16]. Exposure to phenol can be through the skin, inhalation, and ingestion. Inhalation accounts for almost 80% of the case of phenol exposure [17]. Exposure through inhalation or dermal route is highly irritating to skin, eyes and mucous membranes

Systemic effects include the gastrointestinal tract (GIT) irritation [18] and dermal necrosis [19]. In water it caused diarrhea [20], mouth sores, burning of the mouth and dark urine. Short exposure causes irritation of skin and eyes, headache, diarrhea and vomiting [21]. Phenol and hydroquinone have been suggested as factors in producing leukemia connected with benzene exposure. Phenol produces the haematotoxicity effects associated with benzene, triggering DNA and chromosomal damages observed in leukemia, inhibits topoisomerase II and clonal selection process [22,23].

Fish

Phenol is toxic to fish, a sub-lethal concentrations of phenol causing different types of organs and system disorders such as nervous system disorders that result in paralysis and convulsion, interference with respiration causing asphyxia [24], increased necrosis of gills and mucus production [25], destruction of erythrocytes [24], histopathological changes in skin, liver, spleen and heart.

Fish exposed to sublethal concentration (1.5 mg/L) of phenol for more than 10 days has been reported to have a

marked increase in the activities critical liver enzymes (GPT, GOT, LDH, and ALP). The elevation in the transaminases activities may be due to liver injury [26]. Hypocholesterolemia has also been associated with the toxicity of phenol in fish [27]. The African catfish has been reported to have a lethal concentration of phenol (LC₅₀) at 35 mg/L by immersion for [28], *Oreochromis niloticus* (Tilapia) has an LC₅₀ of 29 – 28 mg/L [13], [29] and tilapia (*Oreochromis mossambicus*) has an LC₅₀ of 28.49 mg/L [28]. It can also lead to suffocation at higher dose after 72 to 96 hr exposure [25].

Plants

Phenol is less toxic to many plants; some plants have the ability of phenol bioaccumulation [30]. However, high concentrations of phenol can inhibit the growth index of many plants [31]. Some plants that are exposed to 1000 mg/L phenol cannot survive; they eventually died [32]. Phenol may be accumulated into the plants part such as roots, fruits, and leaves and may be toxic to human and animals if they consume the affected plant [33]. Phenol concentration of 500 mg/L can affect the seed germination of some plants such as *V. Sativa* [31]. Research using a *Brassica napus* hairy root showed that phenol is not toxic to the plants at the concentration of 10-50 mg/L. However, signs of toxicity appeared when a concentration of 100 mg/L was used [34] while *Brassica juncea* hairy root can remove 97% 1000 mg/L phenol without any signs of toxicity [35].

Phenol pollution

Due to the wider use of phenol by the industries, phenol has been found to be a major environmental pollutant discharged in industrial effluents such as from the pesticide making industries [36], paper and pulp [37], textile, plastic [38], gas and coke and steel and oil refineries [39,40]. Phenol as a component of oil refinery waste also acts as a by-product of coal conversion to gaseous and liquid fuels. There are various report cases of phenol contaminations in soil, water, and air from these sources [41]. Phenol can also be introduced into our environment by being discharged from the municipal waste treatment plants and spills [42]. In soil, phenol may remain or degrade by microorganisms; it can be broken down in the air within 1-2 days and may persist in water for weeks. Several pollutions by phenol and its derivatives have been reported around the world as shown in **Table 1**.

Table 1. Some Incidences of phenol pollution around the world [9].

Year	Location	Phenol concentration	Source of pollution
1961	Linggi river,	>0.02 mg/l	effluents
2000	Indonesia	230 tons	tankers
2006	Azerbaijan	-	oil spill
2002	River dee,	-	-
2008	River, South	11 kg	leaked into river
2013	Lake maryut,	0.5 ppm	spillage from oil
2010	River, India	7 mg/l	coke oven
2013	Okrika river,	-	oil refinery

Cells immobilisation

Immobilisation is a term used to describe a broad range of the cell or particle attachment or entrapment methods [43]. It can be utilized to principally all types of biocatalysts including enzymes, cellular organelles, animals and plant cells. Cell immobilization can also be defined as the physical imprisonment or localization of viable microbial cells to a certain defined region of space in such a way as to limit their

free relocation and exhibit hydrodynamic characteristics, which is in contrast to those of the neighbouring environment while being retentive of their catalytic activities for repetitive and continuous use [44–46]. When compare with immobilized enzymes, immobilized cells gives a new potential outcome since they can be utilized as natural, water-insoluble carriers of required enzyme activities [47]. Through the immobilization of microbial cells, their field of utilization spreads from industrial to environmental processes. When retained on supportive carriers, microorganisms can be used and reused continuously permitting for the decrease in cost, as the biocatalyst does not need to be filled up [48–50].

Since the early 70s, when Chibata's group announced a successful process of continuous fermentation of L-aspartic acid [51], numerous research groups had attempted various microbial applications with immobilised cells [52]. Currently, different kinds of immobilisation have found wide applications not only in the field of biotechnology but also in the pharmaceutical, environmental, biosensor and also food industries [53]. The cell immobilization materialized as a substitute for enzyme immobilization, [54] reported cells immobilisation using calcium alginate gels, and immobilisation of yeast using gelatin [55].

In the field of environmental studies, immobilization of microbial cells was first reported by Bettmann and Rehm [56] for the degradation of phenol using a polymer entrapment method, while Anselmo et al. [57] reported on the degradation of phenol by cells of *Fusarium flocciferum* immobilized by entrapment in agar, K-carrageenan, alginate, and polyurethane, and by adsorption on preformed polyurethane foams. *Pseudomonas* sp. B13 cells were successfully immobilised using calcium alginate for the dehalogenation of 3-chlorobenzate, while pentachlorophenol degradation was successfully carried out using polyurethane-immobilized *flavobacterium*, [44,58]. Beunink and Rehm [59] immobilised *Alcaligenes* sp. TK-2 using calcium alginate for 4-dichloro 2-nitrophenol degradation, while [60] immobilised *Alcaligenes* sp. A7-2 in granular clay for the biodegradation of 4-nitrophenol. Beunink and Rehm [61] utilised polyvinyl alcohol as a carrier for biodegrading di-n-butyl phthalate (DBP). Wang et al. reported on the degradation of activated sludge using an improved polyvinyl alcohol, while phenol degradation by gellan gum-immobilised cells of *Acinetobacter* sp. strain AQNOL 1 has been reported [63]. The degradation of phenol by immobilized *Ralstonia eutropha* has also been reported [64].

Four major types of immobilization techniques

Covalent bonding/crosslinking

The mechanism involved in this kind of immobilization is based on the formation of covalent bond between an inorganic support and cell in the presence of a binding agent. Chemical modifications of the surface is a necessary step crosslinking. The covalent attachment or cross-linking are efficient and long-lasting for enzymes, but it is seldom used for immobilization of cells but is very effective for enzymes, this is because most of the binding agents are cytotoxic and can cause cell damage when used for cells immobilization [52]. However, [65] reported a strong covalent binding of the yeast cells on porous silica beads. A successful immobilization of yeast (*Saccharomyces cerevisiae* and *Saccharomyces amurca*) by the method of covalent bonding/crosslinking on borosilicate glass and zirconia ceramics was also reported [66].

Entrapment

Entrapment is an irreversible entrapment of the cells within a support matrix or inside fibers, where immobilized cells are entrapped in a support matrix or inside fibers. The technique ensures a protective barrier around the immobilized microbes, creates prolonged viability during processing and storage in polymers [67]. Entrapment is the most widely considered strategy in cell immobilization [52,68]. In this strategy, a lot of permeable polymers can entangle microorganisms under encompassing conditions [69,70]. Generally speaking, the entrapment techniques depend on the inclusion of the cells inside a rigid system to prevent the cells from diffusing into the encompassing medium while at the same time permitting infiltration of the substrate.

Although several matrices such as agar, carrageenan, cellulose and its derivatives, collagen, gelatin, gellan gum, photo-cross-linkable resins, polyacrylamide, polyester, polystyrene, and polyurethane have been used as support matrices, but alginate gel is the most widely used because its setup uses a simple procedure and also require mild conditions [71]. Entrapment permits high mechanical quality, however, there are few burdens; for example, cell spillage, expenses of immobilization, diffusion limitations, and deactivation after immobilization and abrasion of support materials during usage [72–74].

Gellan gum

Gellan gum is a linear heteropolysaccharide, and it is an anionic compound (Fig. 2). Gellan gum is commercially produced by a gram negative bacteria *Sphingomonas elodea* [75,76] and its structure is consist of repeating unit of tetrasaccharide composed of the backbone 1,3-β-D-glucose, 1,4-β-D-glucuronic acid, 1,4-β-D-glucose and 1,4-α-L-rhamnose. Gellan gum in its natural form is esterified with acetate and L-glycerate at the C-2 and C-6 positions of the (1-3)-linked D-glucose [77]. Based on the acyl content, gellan gum forms diverse kinds of gels. The hard and brittle gels are formed by the deacylated type in the presence of cations, while the native type forms soft and elastic gels even in the absence of cations [78,79].

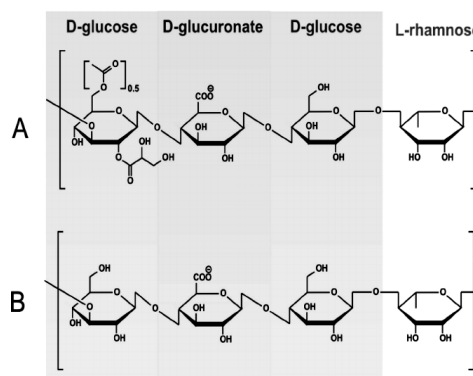


Fig. Error! No text of specified style in document.. The structure of (A) native and (B) low-acyl form of gellan gum.

Encapsulation

In this method of immobilization, the whole cell or the enzymes are enclosed in a semi-permeable membrane in the form of a capsule. It is an irreversible method of immobilization similar to entrapment. Membrane nitrocellulose or nylon are commonly used. In this process, the effectiveness depends on upon the stability of enzymes inside the capsule. The membrane ensures the free flow of nutrients and substrates while keeping the biocatalyst inside the membrane. It is cost effective, simple

procedure and a significant amount of microorganisms or enzymes can be encapsulated. The method was used to immobilize the whole cell in a polymer-gel [80]. It is one of the most common methods employed in the laboratory but suffers from pore size limitations and one of the drawbacks of this method of immobilization is only small substrates can pass through the semi-permeable membrane [81].

Adsorption

Adsorption is a reversible method of cell immobilization and is probably the simplest method of immobilization [82,83]. In this approach, biocatalyst adheres onto porous and inert support materials similar to the adsorption of colloid particles [84]. Forces such as van der Waals forces, ionic and hydrophobic interactions and hydrogen bonds are involved in the process. Adhesion of the cells to the support are usually governed by both electrostatic and hydrophobic interactions, which is the most important process in controlling the cell immobilization on the support [85,86]. This technique is based on the physical interaction between the microorganism and the carrier surfaces and the microorganisms which is frequently reversible. The method is simple, cheap and efficient. The immobilization of microorganisms on suitable adsorbents preserves the physiological characteristics of the organisms, and also stimulates metabolic activities and protects cells from unwanted agents [87]. Adsorption allows a direct contact between the immobilized cells and the nutrient, and thus this is an advantage over entrapment [88].

Recently, immobilization techniques have been receiving increasing attention for the treatment of phenol-containing wastewater [89]. Phenol degradation using immobilized cells could be less expensive since they can be utilized and reused several times without a significant loss of activity [90]. Thus, immobilized cell techniques have been considered as a promising tool for wastewater treatment in the past few decades and in the near future [91]. Many support matrices have been reported by various researcher for the degradation of phenol using immobilization techniques. **Table 2** shows some the microorganisms used and the type of matrices utilized in the process. The most widely reported support matrix is the calcium alginate.

Table ERROR! NO TEXT OF SPECIFIED STYLE IN DOCUMENT.. List of some bacteria and the matrices used for the degradation of phenol by immobilized cells.

Microorganisms	Matrix	Author
<i>Acinetobacter</i> sp.	polyurethane	[92]
<i>Arthrobacter citreus</i>	ca- alginate and agar	[93]
<i>Acinetobacter</i> sp. strain AQ5NOL 1	gellan gum	[94]
<i>Acinetobacter</i> sp. BS8Y	polyvinyl alcohol	[95]
<i>Bacillus cereus</i>	ca-alginate	[96]
<i>Comamonas acidovorans</i>		[97]
<i>Pseudomonas putida</i>	ca-alginate	[98]
<i>Pseudomonas resinovorans</i>	ca-alginate	[89]
<i>Rhodococcus</i> sp.	gellan gum	[99]
<i>Sphingomonas</i> sp.	polyvinyl alcohol	[100]
<i>Candida tropicalis</i>	ca-alginate	[101]
<i>Trichosporon cutaneum</i>	polyamide	[102]

In conclusion, one of the hallmarks of cellular immobilization is the ability to shield bioremediation agents against toxic concentrations of targeted toxicants and shielding from predatory microorganisms. This shielding process must not hinder the diffusion of substrates into the pores of the

membrane. Even though the environmental concentration is high, the limited diffusion of toxicant ensures cellular viability and toxicant remediation. The various immobilization matrices will have their own pitfalls and advantages, and these will have to be judiciously weighed during actual bioremediation works.

ACKNOWLEDGEMENT

This research was supported by an IPS grant from Universiti Putra Malaysia Grant no GP-IPS/2017/9517500 and scholarships from the Gombe State University and the University of Maiduguri, Nigeria.

REFERENCES

- Aghalino SO, Eyinla B. Oil exploitation and marine pollution: evidence from the Niger Delta, Nigeria. *J Hum Ecol.* 2009;28(3):177–82.
- Matkin CO, Saulitis EL, Ellis GM, Olesiuk P, Rice SD. Ongoing population-level impacts on killer whales *Orcinus orca* following the “Exxon Valdez” oil spill in Prince William Sound, Alaska. *Mar Ecol Prog Ser.* 2008;356(1983):269–81.
- Amorati R, Valgimigli L. Modulation of the antioxidant activity of phenols by non-covalent interactions. *Vol. 10.* 2012. 4147 p.
- Fereidoun H, Nourddin MS, Rreza NA, Ahmad R, Pouria H. the Effect of long-term exposure to particulate pollution on the lung function of Teheranian and Zanjanian students. *Pak J Physiol.* 2007;3(2).
- Khan MA, Ghouri AM. Environmental Pollution: Its effects on Life and its remedies. *Res World J Arts Sci Commer.* 2011;II(2):276–85.
- Pang K-L, Chen M-C, Chiang MWL, Huang Y-F, Yeong H-Y, Phang S-M. Cu(II) pollution affects fecundity of the mangrove degrader community, the Labyrinthulomycetes. *Bot Mar.* 2015;58(2):129–38.
- Essien JP, Antai SP. Chromatium species: An emerging bioindicator of crude oil pollution of tidal mud flats in the Niger Delta mangrove ecosystem, Nigeria. *Environ Monit Assess.* 2009;153(1-4):95–102.
- Basha KM, Rajendran A, Thangavelu V. Recent advances in the Biodegradation of Phenol: A review. *Asian J Exp Biol Sci.* 2010;1(2):219–34.
- Kulkarni SJ, Kaware JP. Review on research for removal of phenol from wastewater. *Int J Sci Res Publ.* 2013;3(4):1–5.
- The Star. Priorities coal mining industry. 2008 May 28;
- Mineral and Geoscience Department Malaysia. Malaysia has huge untapped mineral resources [Internet]. 2009 Feb. Available from: <http://www.jmg.gov.my/en/press-releases/86-malaysia-has-huge-untapped-mineral-resources.html>.
- Rahman AA, Shamsuddin AH. Cofiring biomass with coal: Opportunities for Malaysia. *IOP Conf Ser Earth Environ Sci* 26th IAHR Symp Hydraul Mach Syst Beijing China. 2013;16(1):Article number 012144.
- Abdelwahab O, Amin NK, El-Ashtouky ESZ. Electrochemical removal of phenol from oil refinery wastewater. *J Hazard Mater.* 2009 Apr;163(2-3):711–6.
- Geinoz S, Rey S, Boss G, Bunge AL, Guy RH, Carrupt PA, et al. Quantitative structure - Permeation relationships for solute transport across silicone membranes. *Pharm Res.* 2002;19(11):1622–9.
- ATSDR A for TS and DR. Public health statement. Phenol. In 2008. p. CAS # 108–95–2.
- Pedersen G, Brynskov J, Saermark T. Phenol toxicity and conjugation in human colonic epithelial cells. *Scand J Gastroenterol.* 2002;37(1):74–9.
- Gami AA, Shukor MY, Khalil KA, Dahalan FA, Khalid A, Ahmad SA. Phenol and its toxicity. *J Environ Microbiol Toxicol.* 2014;2(1):11–24.
- Selassie CD, DeSoyza T V., Rosario M, Gao H, Hansch C. Phenol toxicity in leukemia cells: a radical process? *Chem Biol Interact.* 1998 Jun;113(3):175–90.
- Human UD of H and. Agency for toxic substances and disease registry. Toxicological Profile for Asbestos. Update. Agency for Toxic Substances and Disease Registry. 1999.

20. Chand Meena M, Band R, Sharma G. Phenol and Its Toxicity: A Case Report. *Iran J Toxicol.* 2015;8(27):1222–4.
21. Fang Yang and, Lee C. Enrichment, isolation, and characterization of phenol-degrading *Pseudomonas resinovorans* strain P-1 and *Brevibacillus* sp. strain P-6. 2007;59:206–10.
22. McDonald T a, Holland NT, Skibola C, Duramad P, Smith MT. Hypothesis: phenol and hydroquinone derived mainly from diet and gastrointestinal flora activity are causal factors in leukemia. *J Leuk Soc Am Leuk Res Fund UK.* 2001;15(August):10–20.
23. Medinsky MA, Kenyon EM, Seaton MJ, Schlosser PM. Mechanistic considerations in benzene physiological model development. *Environ Health Perspect.* 1996;104(SUPPL. 6):1399–404.
24. Ponepal M, Păunescu A. Effect of phenol intoxication on some physiological parameters of *Perca fluviatilis* and *Pelophylax ridibundus*. *Curr Trends Nat Sci.* 2014;3(6):82–7.
25. Saha NC, Bhunia F, Kaviraj A. Toxicity of phenol to fish and aquatic ecosystems. *Bull Environ Contam Toxicol.* 1999;63(2):195–202.
26. Mona S. Zaki, Susan Moustafa HR and NS. Assesment of the hazardous Effect of lead pollution on *Oreochromis niloticus* including hematological, biochemical and immunological parameters. *Am-Eurasian J Agric Env Sci.* 2008;3(1):91–5.
27. Ferrando MD and EA-M. Effect of lindane on the blood of a freshwater fish. *Bull Env Contam Toxicol.* 1991;47:465–70.
28. Ibrahim MD. Experimental exposure of African catfish *Clarias Gariepinus* (Burchell, 1822) to phenol: Clinical evaluation, tissue alterations and residue assessment. *J Adv Res.* 2012;3(2):177–83.
29. Gad NS, Saad AS. Effect of environmental pollution by phenol on some physiological parameters of *Oreochromis niloticus*. *Glob Vet.* 2008;2(6):312–9.
30. Gerhardt KE, Huang XD, Glick BR, Greenberg BM. Phytoremediation and rhizoremediation of organic soil contaminants: Potential and challenges. *Plant Sci.* 2009;176(1):20–30.
31. Ibáñez SG, Alderete LGS, Medina MI, Agostini E. Phytoremediation of phenol using *Vicia sativa* L. plants and its antioxidative response. *Environ Sci Pollut Res.* 2012;19(5):1555–62.
32. González PS, Capozucca CE, Tigier HA, Milrad SR, Agostini E. Phytoremediation of phenol from wastewater, by peroxidases of tomato hairy root cultures. *Enzyme Microb Technol.* 2006;39(4):647–53.
33. Ucisik AS, Trapp S. Uptake, removal, accumulation, and phytotoxicity of 4-chlorophenol in willow trees. *Arch Environ Contam Toxicol.* 2008;54(4):619–27.
34. Coniglio MS, Busto VD, González PS, Medina MI, Milrad S, Agostini E. Application of *Brassica napus* hairy root cultures for phenol removal from aqueous solutions. *Chemosphere.* 2008;72(7):1035–42.
35. Singh S, Melo JS, Eapen S, D'Souza SF. Phenol removal using *Brassica juncea* hairy roots: Role of inherent peroxidase and H₂O₂. *J Biotechnol.* 2006;123(1):43–9.
36. Tsirogiani I, Aivaliotis M, Karas M, Tsiotis G. Mass spectrometric mapping of the enzymes involved in the phenol degradation of an indigenous soil pseudomonad. *Biochim Biophys Acta.* 2004 Jul 1;1700(1):117–23.
37. Badar S, Farooqi HI. Pulp and Paper Industry—Manufacturing Process, Wastewater generation and treatment. In: Malik A, Grohmann E, editors. *Environmental Protection Strategies for Sustainable Development* [Internet]. Dordrecht: Springer Netherlands; 2012. p. 397–436. Available from: http://dx.doi.org/10.1007/978-94-007-1591-2_13
38. Polat H, Molva M, Polat M. Capacity and mechanism of phenol adsorption on lignite. *Int J Miner Process.* 2006;79(4):264–273.
39. Ahmaruzzaman M, Sharma DK. Adsorption of phenols from wastewater. *J Colloid Interface Sci.* 2005;287(1):14–24.
40. Ghanavati H, Emtiazji G, Hassanshahian M. Synergism effects of phenol-degrading yeast and ammonia-oxidizing bacteria for nitrification in coke wastewater of Esfahan Steel Company. *Waste Manag Res.* 2008;26(2):203–8.
41. Bukowska B, Kowalska S. The Presence and Toxicity of Phenol Derivatives — Their Effect on Human Erythrocytes. *Curr Top Biophys.* 2003;27:43–51.
42. Australian and New Zealand Environment and Conservation Council (ANZECC). *Australian Water Quality Guidelines for Fresh and Marine Waters.* 1999.
43. Fernando L, Betancor L, Mateo C, Hidalgo A, Alonso-morales N, Dellamora-ortiz G, et al. Enzyme stabilization by glutaraldehyde crosslinking of adsorbed proteins on aminated supports. *J Biotechnol.* 2005;119:70–5.
44. Dervakos GA, Webb C. On the merits of viable-cell immobilisation. *Biotechnol Adv.* 1991;9(4):559–612.
45. Freeman A, Lilly MD. Effect of processing parameters on the feasibility and operational stability of immobilized viable microbial cells. *Enzyme Microb Technol.* 1998;23(5):335–45.
46. Amim J, Petri DFS, Maia FCB, Miranda PB. Ultrathin cellulose ester films: Preparation, characterization and protein immobilization. *Quimica Nova.* 2010;33(10):2064–9.
47. Vojtisek V, Jirků V. Immobilized Cells. *Folia Microbiol (Praha).* 1983;340.
48. Wada M, Kato J, Chibata I. A New immobilization of microbial cells immobilized using growing carrageenan gel and their properties. *Eur J Appl Microbiol Biotechnol.* 1979;8:241–7.
49. Park J., Chang H. Microencapsulation of microbial cells. *Biotechnol Adv.* 2000;18:303-319.
50. Mrudula S, Shyam N. Immobilization of *Bacillus megaterium* MTCC 2444 by Ca- alginate entrapment method for enhanced alkaline protease production. *Arch Biol Technol V.* 2012;55155(1):135–44.
51. Coughlan MP, Marek PJ. Preparation and applications of immobilized microorganisms: a survey of recent reports. *J Microbiol Methods.* 1988;8:51–90.
52. Ramakrishna S., Prakasha R. Microbial fermentations with immobilized cells. *Curr Sci.* 1999;(77):87–100.
53. Peinado RA, Moreno JJ, Maestre O, Mauricio JC. Use of a novel immobilization yeast system for winemaking. *Biotechnol Lett.* 2005;1:1421–4.
54. Gianfreda L, Parascandola P, Scardi V. Microbiology and biotechnology a new method of whole microbial cell immobilization. *Eur J Appl Microbiol Biotechnol.* 1980;7:6–7.
55. Woodward J. Methods of immobilization of microbial cells. *J Microbiol Methods.* 1988;8(1):91–102.
56. Bettmann H, Rehm HJ. Degradation of phenol by polymer entrapped microorganisms. *Appl Microbiol Biotechnol.* 1984;20(5):285–90.
57. Anselmo AM, Mateus M, Cabral JM., Novais M. Degradation of phenol by immobilised cells of *Fusarium flocciferum*. *Biotechnol Lett.* 1985;7(12):889–94.
58. O'Reilly KT, Crawford RL. Degradation of pentachlorophenol by polyurethane-immobilized Flavobacterium cells. *Appl Environ Microbiol.* 1989;55(9):2113–8.
59. Beunink J, Rehm H. Coupled reductive and oxidative degradation of 4-chloro-2-nitrophenol by a co-immobilized mixed culture system. *Environ Microbiol.* 1990;108–15.
60. Balfanz J, Rehm H-J. Biodegradation of 4-chlorophenol by adsorptive immobilized *Alcaligenes* sp. A 7-2 in soil. *Appl Microbiol Biotechnol.* 1991;35:662–8.
61. Wang C, Li Y. Incorporation of granular activated carbon in an immobilized membrane bioreactor for the biodegradation of phenol by *Pseudomonas putida*. *Biotechnol Lett.* 2007 Sep;29(9):1353–6.
62. Zhang L Sheng, Zhong WUW, Long Wang J. Immobilization of activated sludge using improved polyvinyl alcohol (PVA) gel. *J Environ Sci.* 2007;19(11):1293–7.
63. Wang Z, Ye Z, Zhang M, Bai X. Degradation of 2,4,6-trinitrotoluene (TNT) by immobilized microorganism-biological filter. *Process Biochem.* 2010;45(6):993–1001.
64. Nickzad A, Mogharei A, Monazzami A, Jamshidian H, Vahabzadeh F. Biodegradation of phenol by *Ralstonia eutropha* in a Kissiris-immobilized cell bioreactor. *Water Environ Res.* 2012;84:626–34.
65. Navarro JM, Durand G, Ranguel AD. Applied Microbiology Immobilization onto porous glass. *Eur J Appl Microbiol Biotechnol.* 1977;4.
66. Messing, RA, Kolot F., Oppermann RA. Pore Dimensions for accumulating biomass. II. Microbes that form spores and exhibit mycelial growth. *Biotechnol Bioeng.* 1979;XXI:59–67.

67. Górecka E, Jastrzębska M. Immobilization techniques and biopolymer carriers. *Biotechnol Food Sci.* 2011;75(1):65–86.
68. López A, Lázaro N, Marqués AM. The interphase technique: A simple method of cell immobilization in gel-beads. *J Microbiol Methods.* 1997;30(3):231–4.
69. Verma M, Brar SK, Blais JF, Tyagi RD, Surampalli RY. Aerobic biofiltration processes — Advances in wastewater treatment. *Pract Period Hazard Toxic Radioact Waste.* 2007;10(4):264–76.
70. Martins SCS, Martins CM, Fiúza LMCG, Santaella ST. Immobilization of microbial cells: A promising tool for treatment of toxic pollutants in industrial wastewater. *Afr J Biotechnol.* 2013;12(28):4412–8.
71. Kierstan M, Bucke C. The immobilization of microbial cell, subcellular organelles and enzymes in ca-alginate gels. *Biotechnol Bioeng.* 1977;XIX(3):387–97.
72. Krekler C, Ziehr H, Klein J. Influence of physicochemical bacterial surface properties on adsorption to inorganic porous supports. *Appl Microbiol Biotechnol.* 1991;1:484–90.
73. Seung HS, Suk SC, Park K, Yoo YJ. Novel hybrid immobilization of microorganisms and its applications to biological denitrification. *Enzyme Microb Technol.* 2005;37(6):567–73.
74. Gao S, Wang Y, Diao X, Luo G, Dai Y. Effect of pore diameter and cross-linking method on the immobilization efficiency of *Candida rugosa* lipase in SBA-15. *Bioresour Technol.* 2010;101(11):3830–7.
75. Jansson PE, Lindberg B, Sandford PA. Structural studies of gellan gum, an extracellular polysaccharide elaborated by *Pseudomonas elodea*. *Carbohydr Res.* 1983;124(1):135–9.
76. O'Neill MA, Selvendran RR, Morris VJ. Structure of the acidic extracellular gelling polysaccharide produced by *Pseudomonas elodea*. *Carbohydr Res.* 1983;124(1):123–33.
77. Kuo MS, Mort AJ, Dell A. Identification and location of 1-glycerate, an unusual acyl substituent in gellan gum. *Carbohydr Res.* 1986;156(C):173–87.
78. Morris ER, Gothard MGE, Hember MWN, Manning CE, Robinson G. Conformational and rheological transitions of welan, rhamosan and acylated gellan. *Carbohydr Polym.* 1996;30(96):165–75.
79. Osmalek T, Froelich A, Tasarek S. Application of gellan gum in pharmacy and medicine. *Int J Pharm.* 2014;466(1-2):328–40.
80. Jen AC, Wake MC, Mikos AG. Review: Hydrogels for Cell Immobilization. *Biotechnol Bioeng.* 1996;50:357–64.
81. Lozinsky VI, Plieva FM. Poly(vinyl alcohol) cryogels employed as matrices for cell immobilization. 3. Overview of recent research and developments. *Enzyme Microb Technol.* 1998;23(3-4):227–42.
82. Monsan P, Durand G, Navarro JM. Immobilization of microbial cells by adsorption to solid supports. *Methods Enzymol.* 1987;135(C):307–18.
83. Kozlyak E, Solomon Z, Yakimov M, Fadyushina T, Rogozhin I, Germansky G, et al. Adsorption of *Pseudomonas fluorescence* 16 N 2 cells on triacetate cellulose fibres. *Prikl Biokhim Mikrobiol.* 1991;27(4):508–13.
84. Araujo E., Andrade NJ, Carvalho A., Ramos A., Silva S. A. Colloidal aspects of bacterial adhesion. *Quím Nova.* 2010;33(1):940–1948.
85. Hsu CH, Chu YF, Argin-Soysal S, Hahm TS, Lo YM. Effects of surface characteristics and xanthan polymers on the immobilization of *Xanthomonas campestris* to fibrous matrices. *J Food Sci.* 2004;69(9):E441–E448.
86. Chu YF, Hsu CH, Soma PK, Lo YM. Immobilization of bioluminescent *Escherichia coli* cells using natural and artificial fibers treated with polyethyleneimine. *Bioresour Technol.* 2009;100(13):3167–74.
87. Nikovskaya G. The adhesive immobilization of microorganisms in water purification. *Khimiya Tekhnologiya Vody.* 1989;11(2):158–69.
88. Braschler T, Johann R, Heule M, Metref L, Renaud P. Gentle cell trapping and release on a microfluidic chip by in situ alginate hydrogel formation. *R Soc Chem.* 2005;5(5):553–9.
89. Mohanty SS, Jena HM, Satpathy GR. Comparative study of the phenol degradation potential of free and immobilized *Pseudomonas resinovorans*. In: 4th Internal Congress of Environmental Research 15-17th December, 2011 at Surat, India. India; 2011. p. 1–11.
90. Camelin I, Lacroix C, Paquin C, Prbvost H, Cachon R, Diviest C. Effect of chelatants on gellan gel rheological properties and setting temperature for immobilization of living Bifidobacteria. *Biotechnol Prog.* 1993;291–7.
91. An T, Zhou L, Li G, Fu J, Sheng G. Recent patents on immobilized microorganism technology and its engineering application in wastewater treatment. *Recent Pat Eng.* 2008;2(1):28–35.
92. Adav SS, Chen MY, Lee DJ, Ren NQ. Degradation of phenol by *Acinetobacter* strain isolated from aerobic granules. *Chemosphere.* 2007;67(8):1566–72.
93. Karigar C, Mahesh A, Nagenahalli M, Yun DJ. Phenol degradation by immobilized cells of *Arthrobacter citreus*. *Biodegradation.* 2006;47–55.
94. Ahmad SA, Shamaan NA, Arif NM, Koon GB, Shukor MYA, Syed MA. Enhanced phenol degradation by immobilized *Acinetobacter* sp. strain AQ5NOL 1. *World J Microbiol Biotechnol.* 2012;28(1):347–52.
95. Jiang L, Ruan Q, Li R, Li T. Biodegradation of phenol by using free and immobilized cells of *Acinetobacter* sp. BS8Y. *J Basic Microbiol.* 2012;1–7.
96. Banerjee A, Ghoshal AK. Phenol degradation performance by isolated *Bacillus cereus* immobilized in alginate. *Int Biodeterior Biodegrad.* 2011;65(7):1052–60.
97. Yap LF, Lee YK, Poh CL. Mechanism for phenol tolerance in phenol-degrading *Comamonas testosteroni* strain. *Appl Microbiol Biotechnol.* 1999;51(6):833–40.
98. Aksu Z, Bülbül G. Determination of the effective diffusion coefficient of phenol in Ca-alginate-immobilized *P. putida* beads. *Enzyme Microb Technol.* 1999;25(3-5):344–8.
99. Arif NM, Ahmad SA, Syed MA, Shukor MY. Isolation and characterization of a phenol-degrading *Rhodococcus* sp. strain AQ5NOL 2 KCTC 11961BP. *J Basic Microbiol.* 2013;53(1):9–19.
100. Cirja M, Hommes G, Ivashchkin P, Prell J, Schäffer A, Corvini PFX, et al. Impact of bio-augmentation with *Sphingomonas* sp. strain TTNP3 in membrane bioreactors degrading nonylphenol. *Appl Microbiol Biotechnol.* 2009;84(1):183–9.
101. Basak B, Bhunia B, Dutta S, Chakraborty S, Dey A. Kinetics of phenol biodegradation at high concentration by a metabolically versatile isolated yeast *Candida tropicalis* PHB5. *Environ Sci Pollut Res.* 2014;21(2):1444–54.
102. Aleksieva Z, Ivanova D, Godjevargova T, Atanasov B. Degradation of some phenol derivatives by *Trichosporon cutaneum* R57. *Process Biochem.* 2002;37(11):1215–9.